

[More Guides and Tutorials](#)

Disassemble the Wii

This guide will take you through the process of disassembling your Wii for the purpose of installing a Yowii chip. It is a good idea to read through the entire guide before beginning.



Tools

You will need the following tools:

- Tri-wing Screwdriver
- Flat head Screwdriver
- Small Phillips head Screwdriver (precision)
- Razor Knife (Exacto, Stanley knife): Optional for removing paper feet undamaged
- Container for screws

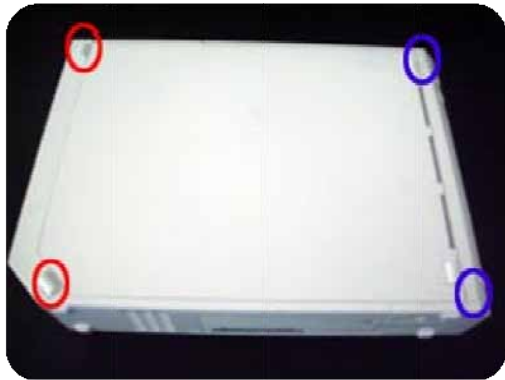
Step 1

Remove controller port and memory card doors.

To do this, open the doors and push them towards the top side of the console, then pull out. This does not take much force.



Step 2



Turn the console upside down.

Remove the two **plastic feet** carefully with the flat head screwdriver.

Remove the two **paper feet** with the razor knife.



Remove the four tri-wing screws that have been uncovered with your tri-wing screwdriver.

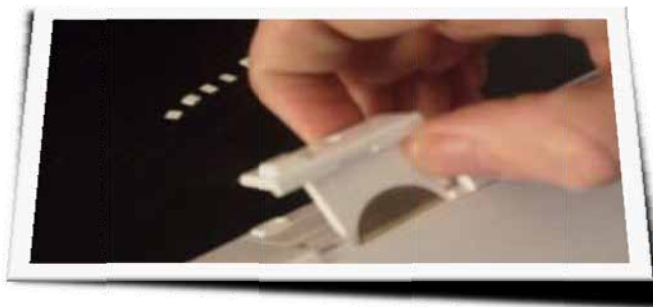
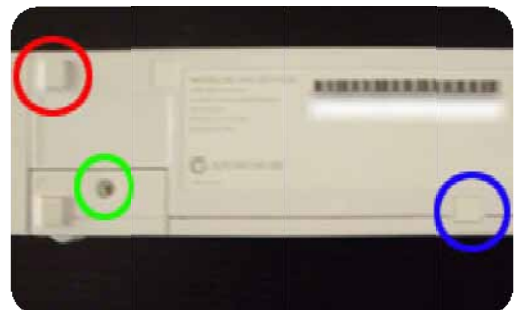
Step 3

On the side with the serial number:

Remove **plastic foot**

Remove **paper foot**

Use the Phillips head screw driver to unscrew **battery screw** and remove battery.



Step 4

Remove the **black Phillips head screw** that is under the plastic foot.

Remove the **screw in the battery compartment** and the one from under the **paper foot**.



At this point, there is only one screw holding in the faceplate (where the disc goes in), so handle carefully.

Step 5

Turn the console so that the controller ports face you.

Remove the three black screws with a Phillips head screwdriver.

Remove the two shown in **blue first**

Remove the one shown in **red last**. It is holding on the faceplate.



Step 6

Carefully remove the faceplate by pulling out slightly and then laying down as pictured.

Unplug the **connector cable**.

Try not to use too much force.



Step 7

Back on the controller port side, remove the black controller port cover.

It comes off very easily if you pull from the **top memory card slot**.



Step 8

Underneath the controller port cover you will find more screws.

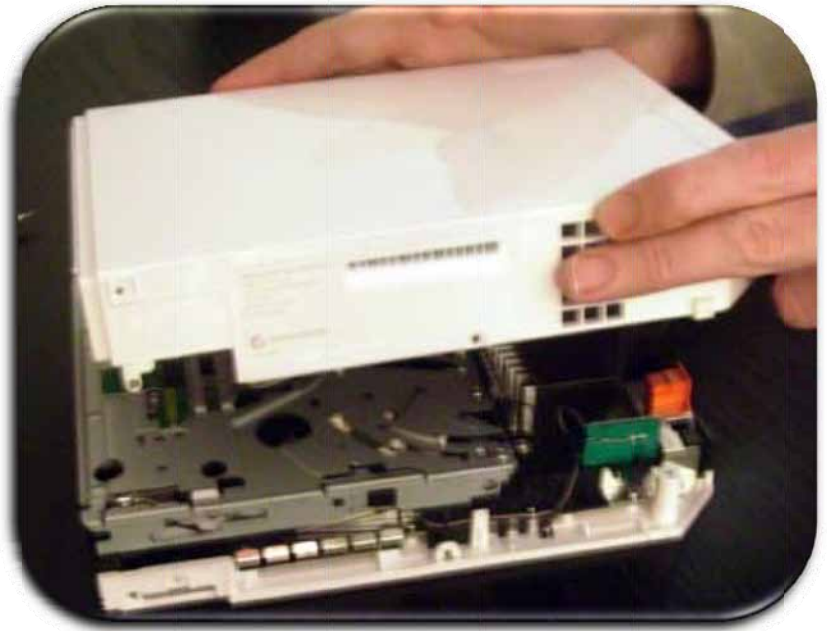
Using the tri-wing screwdriver, undo the **two screws** as pictured.



Step 9

Remove the top plastic cover by pulling up gently on each of the four corners and then lifting straight up evenly.

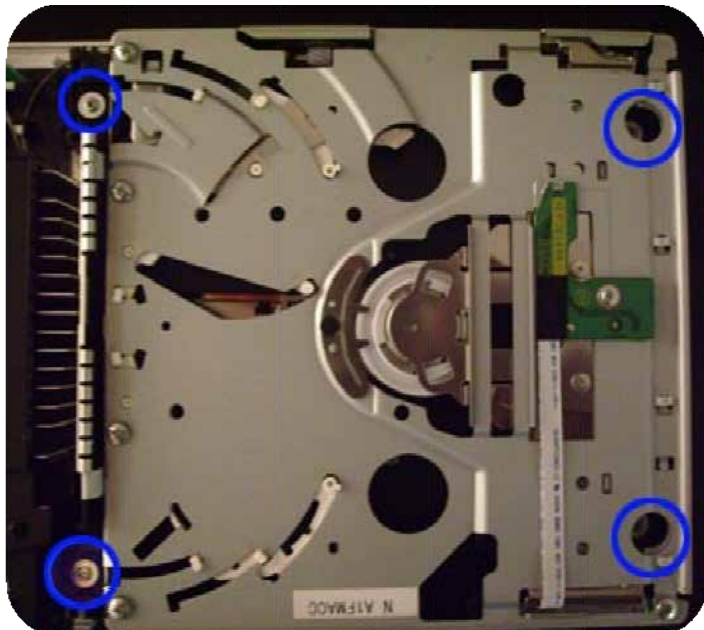
Note that when re-assembling, there are metal tabs on both sides of the lid that you may have to push inwards slightly before the lid slides into place.



Step 10

Remove the four dvd drive screws.

It is better if your screwdriver is slightly magnetic for this part.



Step 11

Carefully lift dvd drive up enough to fit your fingers between the drive and the motherboard casing.

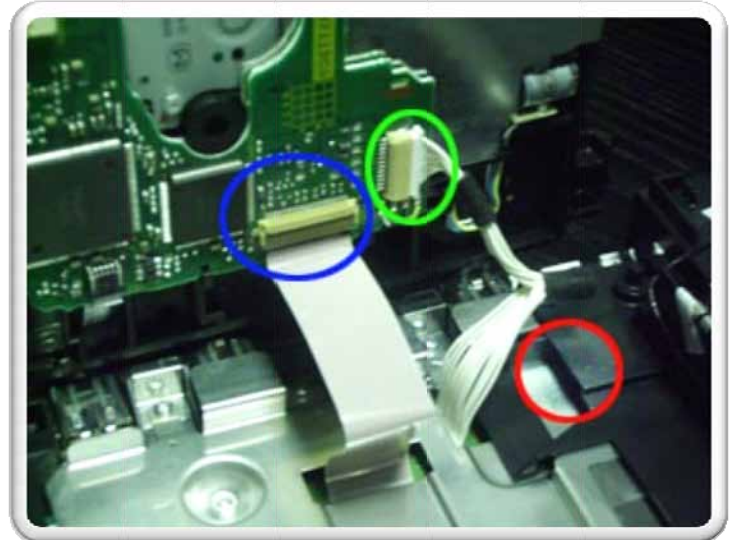
At this point you will feel some resistance.

This is caused by one of the dvd drive cables getting caught on a **piece of plastic**. If you look into the gap you have made you should be able to see it.

Slide your hand in there and gently pull the cable forward, then continue lifting, but only lift the side farthest from the controller ports.

It should end up as shown in the picture.

Disconnect the **wire cable** by pulling it straight out. The **ribbon cable** is held in place by a hinged connector. Use a fingernail to pull it up and unlatch it.



Congratulations.

You have disassembled your Wii.

Have fun.