



## External Wire Install Guide for Yowii Chip

---

Follow the guide to [disassembling the Wii](#) first.

Read through all steps below before beginning!

### Tools

---

Soldering Iron

Solder

Flux (optional)

Wire cutters/wire strippers

Desoldering braid/solder sucker (in case of mistakes)

Bright light (optional but highly recommended)

Magnifying glass (optional)

Hot Glue Gun (optional)

### Step 1

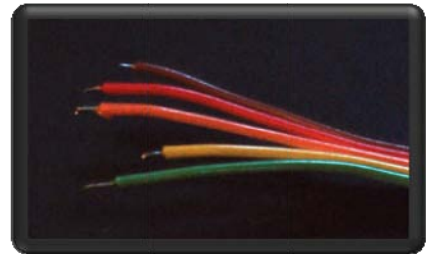
---

First you need to choose where you will place the Yowii chip and how long the wires will need to be. We suggest the position pictured here, but it is entirely up to you.



## Step 2

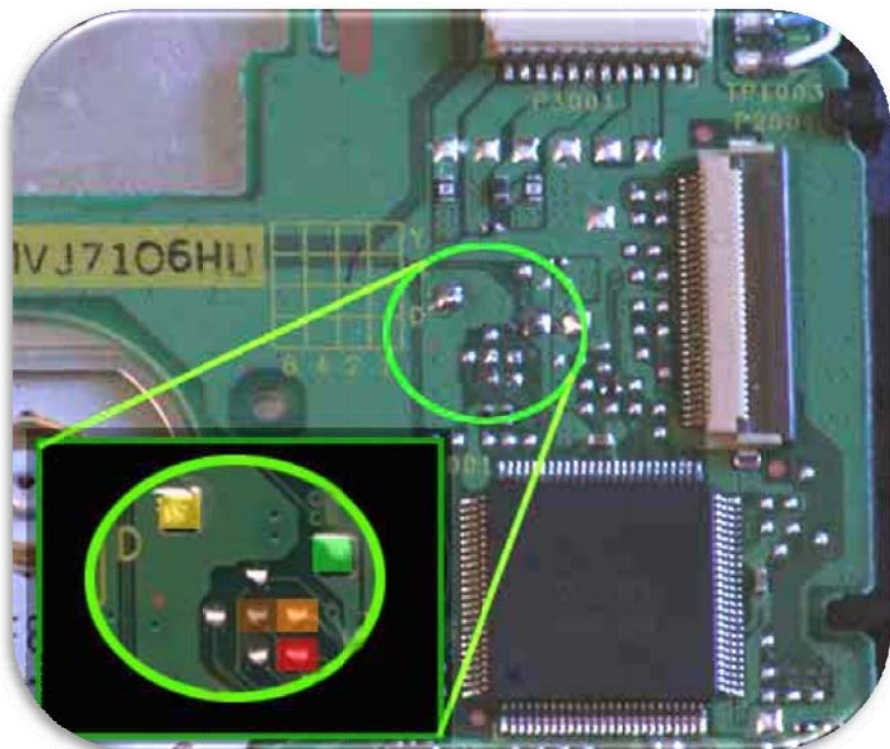
Once you have worked out the length of your wires, you need separate the individual wires, cut them to correct length, strip them back and tin them (melt solder to the wire). The more accurate your measuring, the easier the wires will be to solder. Try to expose only a small amount of the wire when stripping them back. This decreases your chances of having the exposed wires touching and causing the chip not to function.

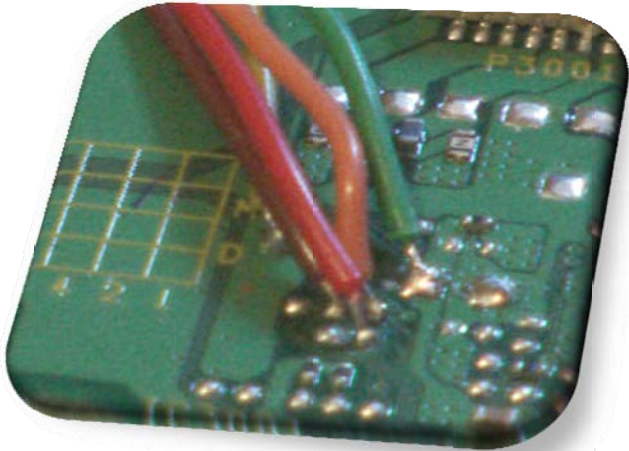


## Step 3

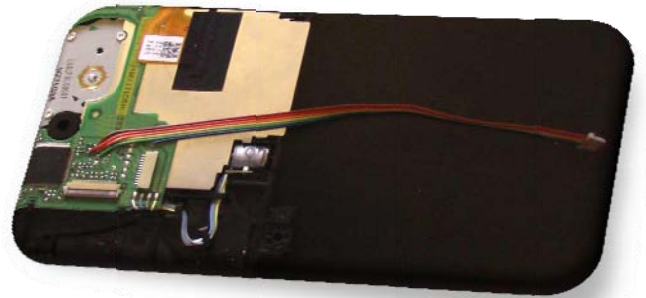
Solder the wires to the board, matching the colored wires up with the matching colored points shown here. The best order to solder in is generally: YELLOW GREEN BROWN ORANGE RED.

This is assuming you are installing as suggested above. Installing in the suggested order minimizes the risk of melting other wires. It also makes it easier to see what you are doing.





Once you are done, it should look like these.



## Step 4

---

If you have one, use a hot glue gun to glue the wires to the board a short distance away from where you soldered them. This is especially important for external installs, since there is the possibility of damage from the wires being pulled on too hard. **Do not hot glue the solder points. If you do, you will have a lot of trouble if you ever need to resolder/remove wires.** Plug in the Yowii Chip and then position the wires coming out of the usb as shown in this picture. The half turn is important. It helps the wire sit correctly and allow you to mount the chip above the usb.



## Step 5

Place the lid on the console gently and check that the chip will position correctly as shown here.

If it all fits, reassemble the Wii as normal and test.

Make sure you use a game for your region or a setup disc when you are running for the first time.

Congratulate yourself. You have Modded your Wii.

**Disclaimer:** Only follow this guide if you are willing to take responsibility for your own actions. Yowii is not in control of you and therefore takes no responsibility for anything you do. This information is like anything else you find on the net.

Use it or ignore it; it's your choice!

[Yowii.net](http://Yowii.net)

